

Auric Fields

**“God breathed life into Adam”
Genesis 2:7.**

**That animating force — breath,
spirit, life-energy — is the same
concept. The aura is simply the
energetic field that living things
emit because they're alive.**

**“The light of the body is the eye. If
therefore thine eye be single, thy
whole body shall be full of light”
Matthew 6:22**

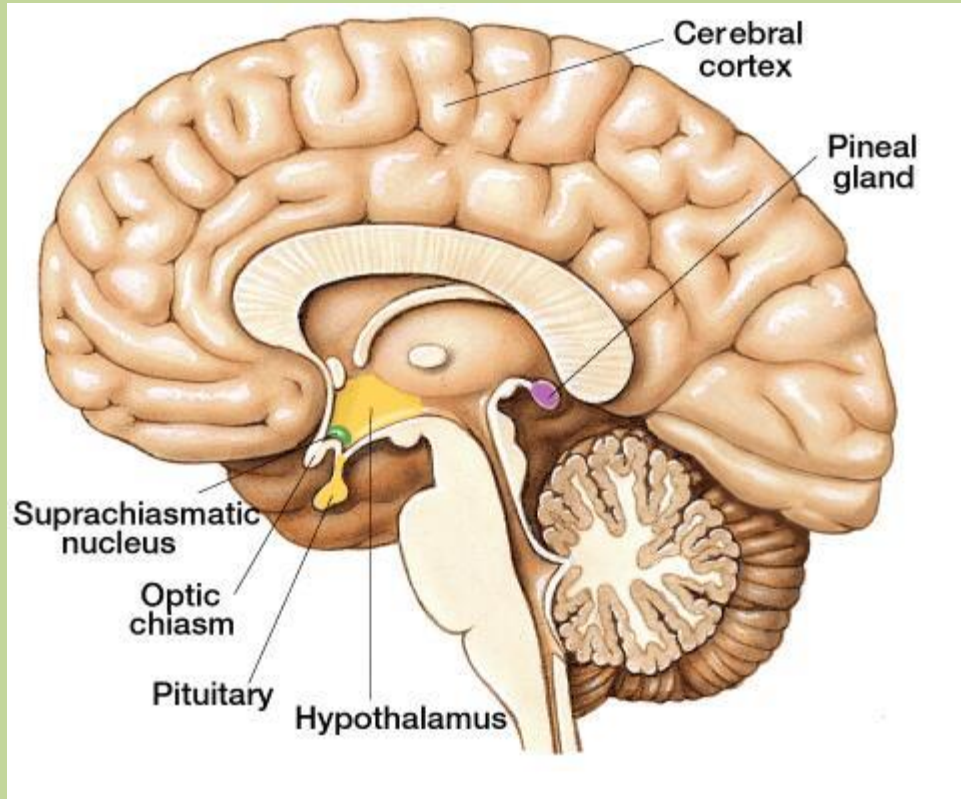


**Saints in iconography
have halos —many
religions have depicted
holy people as emanating
light.**

**Modern
bioelectromagnetic
research**

(biophotons, biofields)

**shows that
living cells emit
measurable light and
electromagnetic
fields.**



**The pineal gland
isn't just an
organ.**

**It's a Biological
Antenna**

In 2002, scientists discovered microscopic calcite crystals inside the pineal gland. These are piezoelectric crystals... the same kind used in radios, microphones, and frequency receivers.

Piezoelectricity means that when these tiny crystals are exposed to pressure or vibration, they create an electrical charge.

When you move, breathe deeply, experience intense emotions, or expose yourself to specific sound frequencies, hum, these crystals respond.

The pineal gland is also surrounded by cerebrospinal fluid. This happens to be one of the most conductive substances in the body.

Breathwork techniques like Wim Hof who does the cold plunges, Kriya Yoga and Holotropic Breathing create rhythmic pressure changes in cerebrospinal fluid, surrounding the pineal gland.

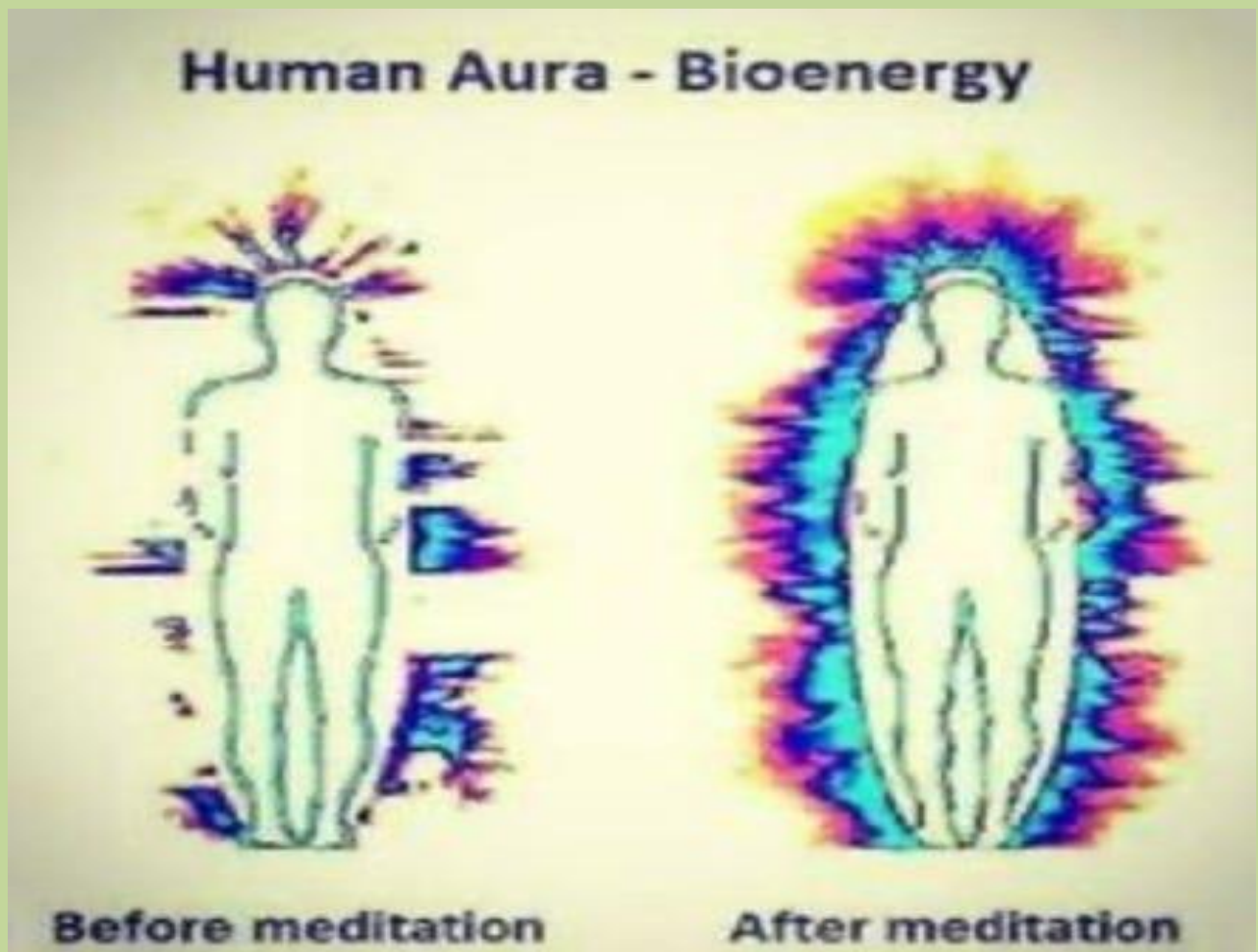
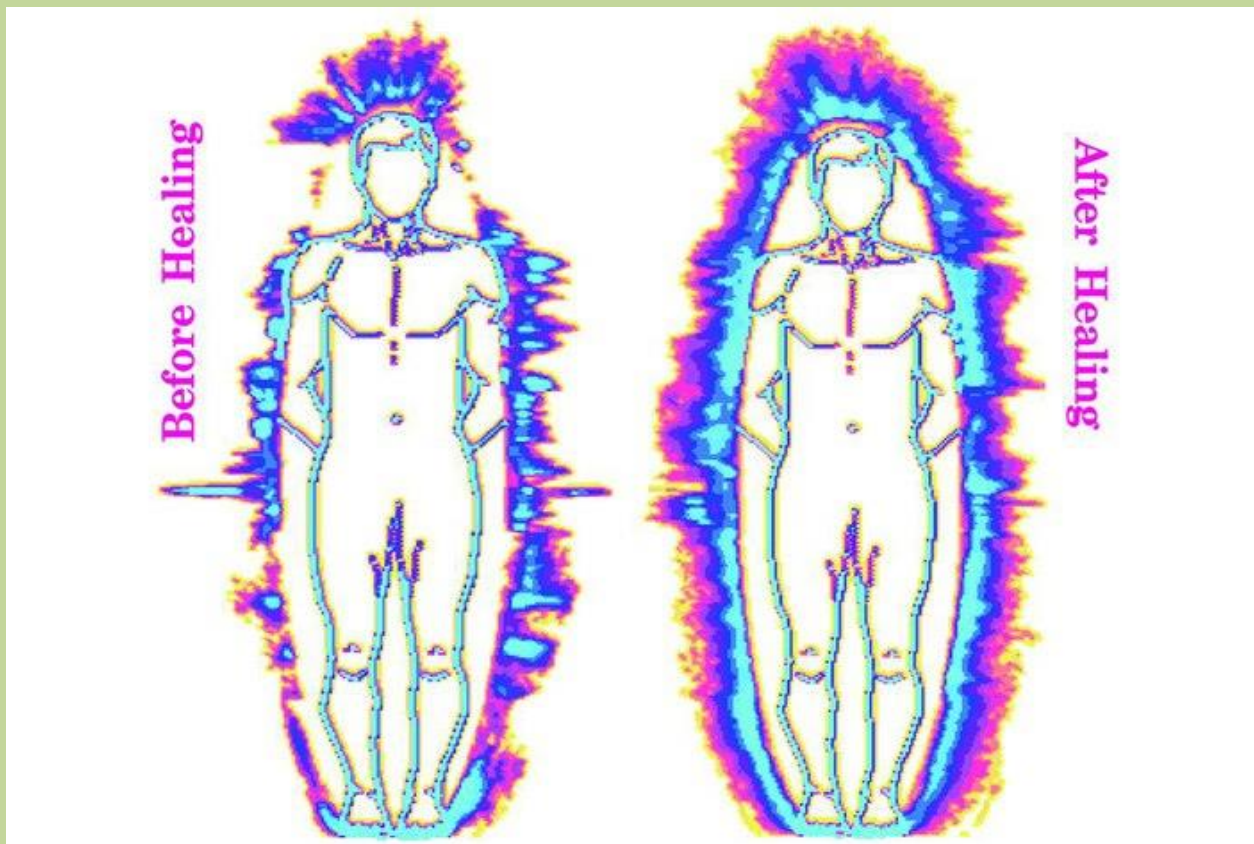
There is latest research, including the work of Dr. Joe Dispenza, who believes this “pumps” the gland, to add pressure for decalcification and unlocking the door to Light. Thus, giving energy to the Auric Field makes it brighter and more expansive.

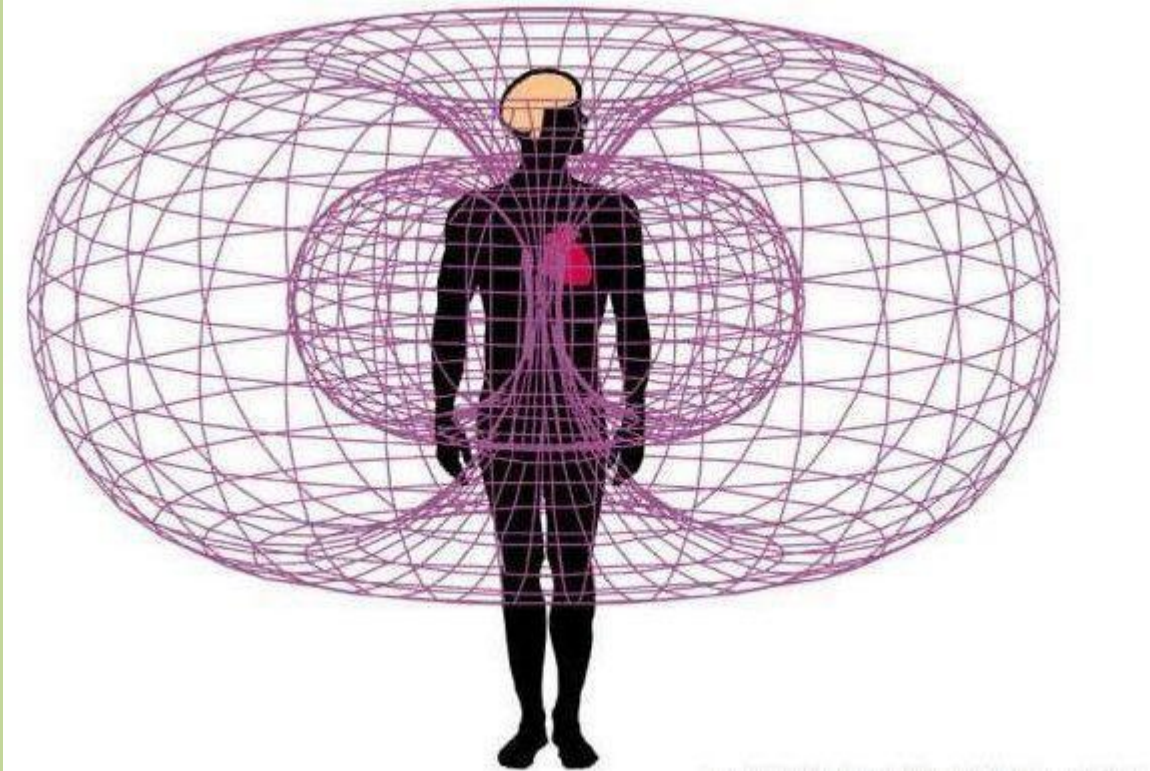
**When the hypothalamus
and pituitary gland
resonate with the
pulsating vibration of the
pineal gland, our system
can move toward
harmony.**

**In turn, they send
messages to the heart,
which communicates
with the rest of the body
through its own
electromagnetic pulsing.**

**This is how focusing
on your heart and
Calming can greatly
assist in healing.**

Examples Auric Field taken with GDV Kirlian photography





It is well documented that the human heart generates the strongest magnetic field in the body, nearly 5,000 times stronger than that of the brain.

This field creates a doughnut shaped pattern that extends well beyond the physical body and has been measured at distances of five to eight feet from the physical heart.

Data suggest that this field may be so large that we end up measuring it in miles (5 Miles). However, it's beyond the scope of the equipment used to detect such fields.

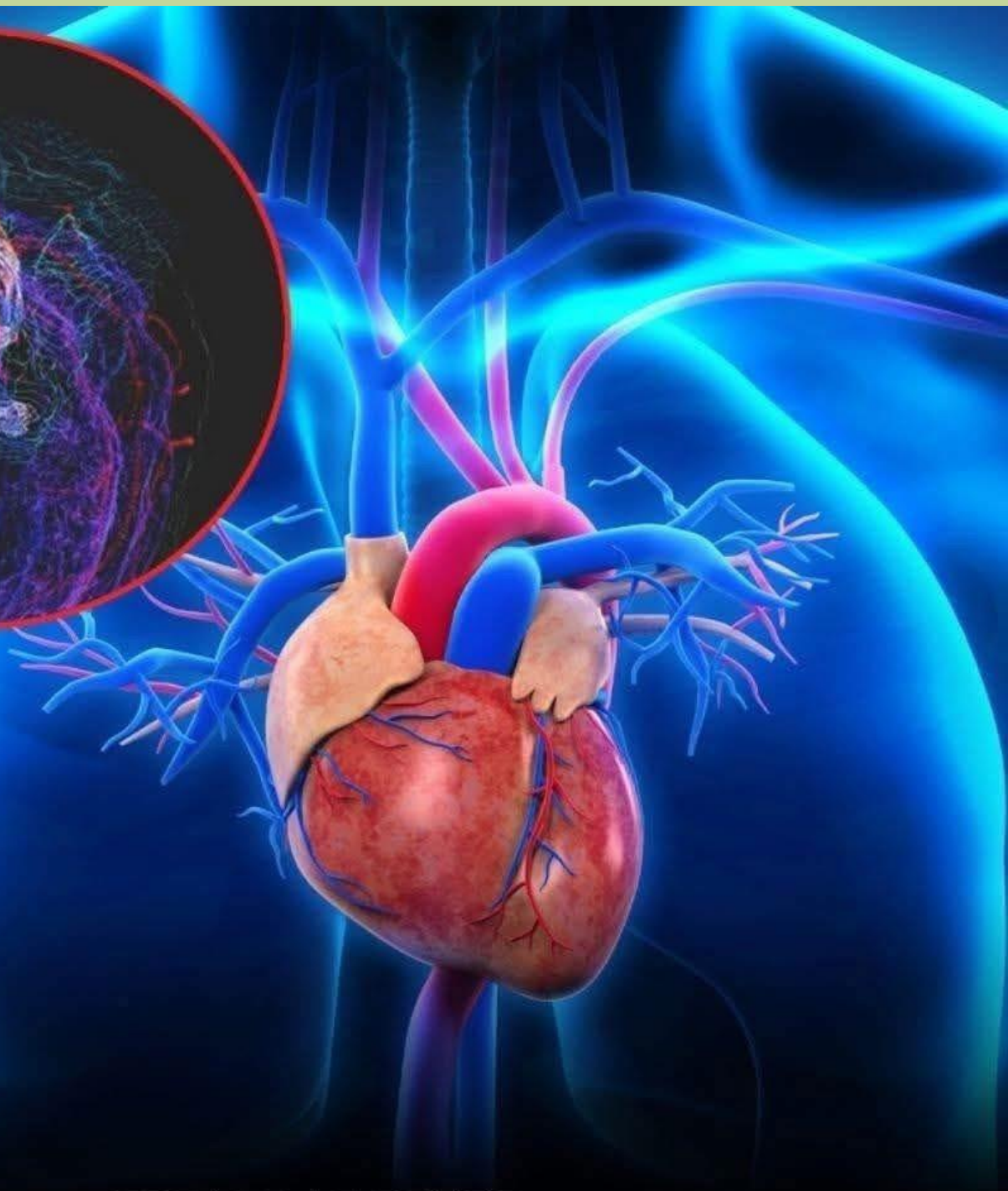
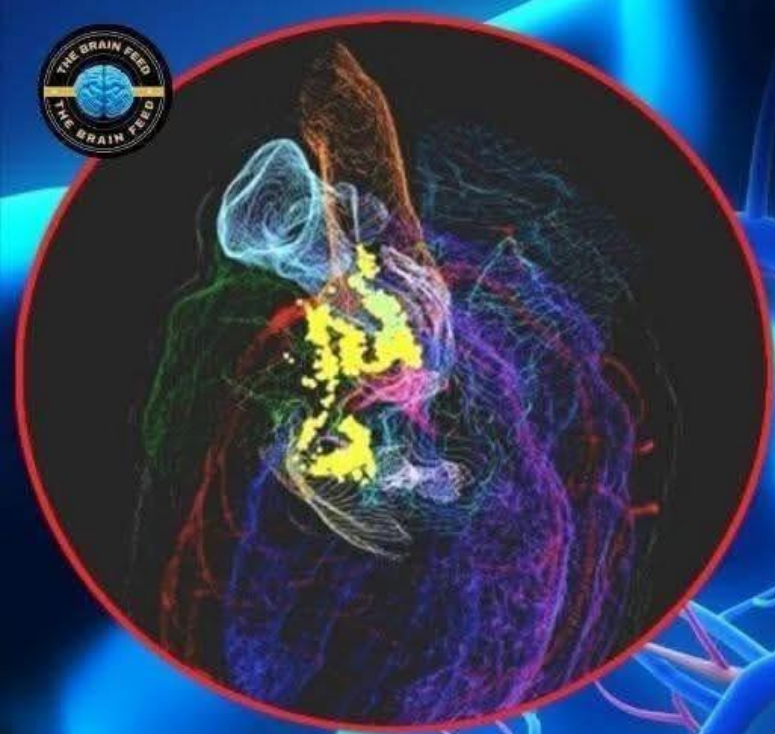
The hearts magnetic field responds to the quality of emotion that we create in our lives. Just as the intuitive link between feelings and the body seems to suggest, positive emotions increase the physical balance of hormones and heart rhythms, as well as the mental clarity and productivity.

Just as intuitively studies show that negative emotions can influence as many as 1,400 biochemical changes in the body that include hormonal imbalance, heart-rhythm chaos, mental “fogginess” and poor performance... (no wonder we are being fed all the angry, violent, negative news by the media daily).

**This is why it is important to Reset
Your
Autonomic Nervous System Daily**

**When you hear me say drop into
your Heart and Get Out of your
Head...**

**Healing Amplifies when you
are in your HEART**

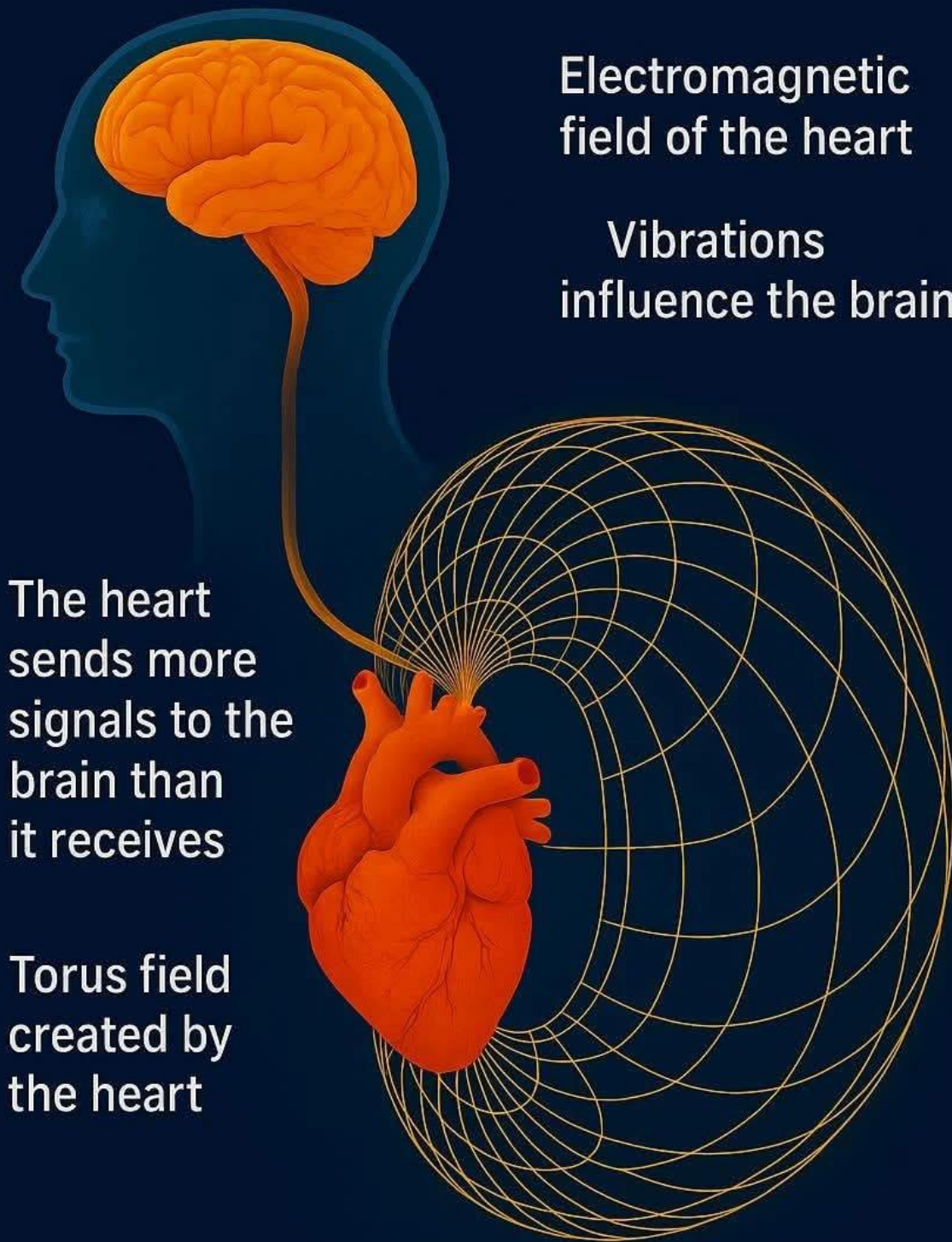


----- THE BRAIN FEED -----

**THE HEART HAS ITS OWN MINI
BRAIN WITH 40,000 NEURONS,
SENDING 80% OF SIGNALS TO
THE BRAIN AND INFLUENCING
OUR EMOTIONS AND DECISIONS.**

THE HEART–BRAIN DIALOGUE

A COHERENT FIELD OF INTELLIGENCE



Electromagnetic
field of the heart

Vibrations
influence the brain

The heart
sends more
signals to the
brain than
it receives

Torus field
created by
the heart

The heart is a powerful organ of
perception and intelligence

Every beat of the Heart sends a wave not only through blood vessels—but through lymphatics, fascia, cerebrospinal fluid, and subtle electromagnetic layers.

Energetic therapies, like resetting the Autonomic Nervous System entrain these layers, influencing:

- **Heart Rate Variability (HRV) — a key indicator of emotional and physiological resilience.**

- **Coherence — the entrainment between brain waves and heart align in rhythm which reflects alignment between emotional, cognitive, and the nervous system..**

We are starting to see how everything is connected

Video

**Sept FHS Artie Reset
ANS with Divining
Rods**

7:33 – 14.31

*The HEART emits
the strongest electromagnetic field of any
organ.*

When that field is coherent (higher frequency
and smoother waveform), it:

- Stabilizes the nervous system
- Improves cellular communication
- Influences others around you via field resonance
- Becomes a conduit for higher-order consciousness.

The state of Grace and Love.

Your heart has actual “heart strings that support the integrity of the valves, but on an energetic level, sound literally pulls on the chords of your heart.

Every emotion is a frequency. Every frequency shapes matter.

- Harmonic Frequency like Solfeggio, overtone-rich frequencies, (*that are on our Biomodulator PRO and Biomodulator Plus 2*)

activates the calmness, healing in the heart and tunes the body.

- Dissonant sound, Violence, Negative News, Loud Aggressive Music, Sports, contracts and distorts the waveform—reducing coherence.

Creating “Fight or Flight or Frozen Survival Mode”

- *Emotion is sound slowed into chemistry.*

***Your heart “Sings” your
emotional state
into your field via
resonance and
entrainment.***

**This is seen when
2 pendulums on a shared
structure
align their swings
or strings on a guitar
will vibrate in sympathy
with strings on another
nearby guitar.**

**The energy creates
sympathetic vibrations in
the air.**

*When you feel
“heartbreak,”
what you’re actually
experiencing is field
rupture.*

**Your toroidal loop is
interrupted, frequency
escapes before it can
recirculate.**

**This is why grief
isn’t just emotional,
it is
Energetic.**

**When you feel
“Heart Expansion,”**

**Your torus or aura
opens and expands,
pulling in from
far beyond your body.**

*That’s why love
can feel profound,
often sudden,
experience of deep
connection,
unity, and spiritual
clarity
with sensations of
Awe, Peace, and Grace.
It’s literally field
Convergence.*

***You place left hand on your heart. The place
your right hand on top of it.
Feel..***

**In this moment of Truth,
you're not calming yourself,
you're activating
the touch point current
of your Heart.**

**This is how you remind your field:
This is home.
*This is source.***

**The plasma that flows through your heart is
not just blood — it is liquid memory.**

***This is why heartbeats
change under truth.***

Why rhythms sync between lovers.

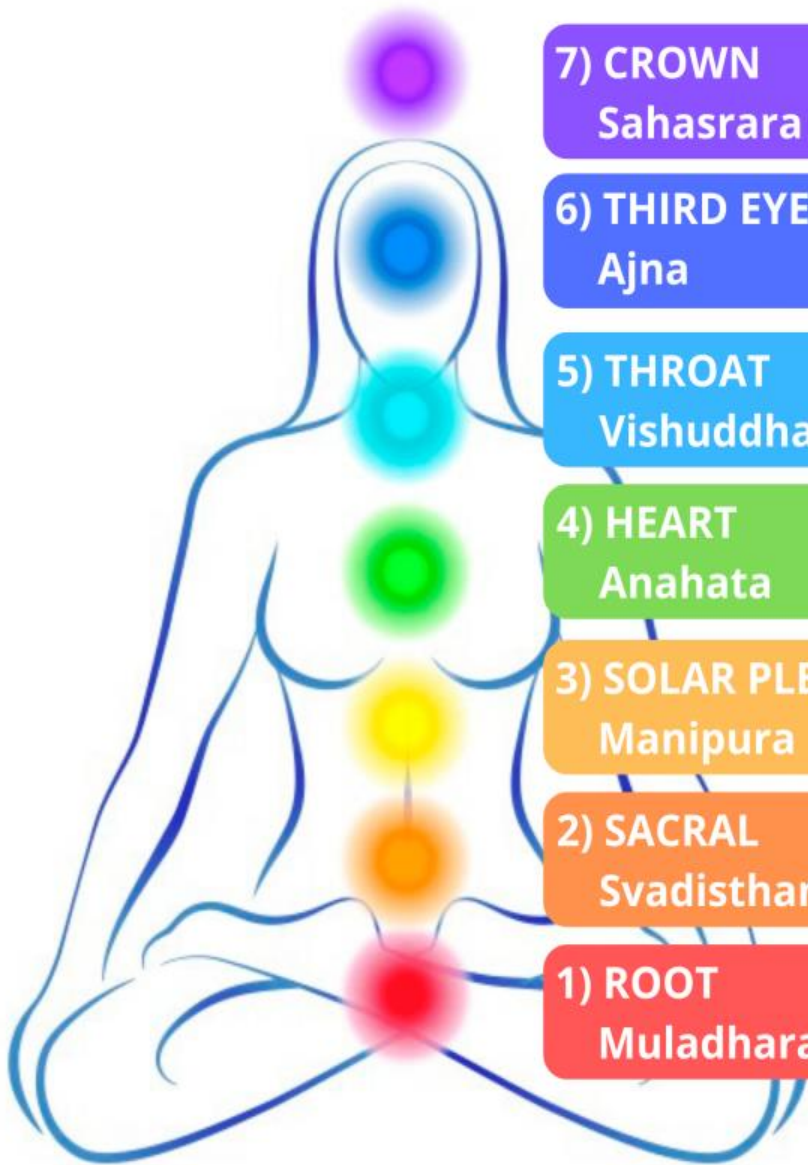
Why the fetal heart entrains to the Mother's.

**The electromagnetic field
of
the Heart
is the most powerful in
the body.**

**Brain waves can be
charted in hertz,
mapping mental states
from deep sleep to alert
focus.**

**Energetic therapy
researchers have mapped
resonances of organs,
finding that each tissue
type responds to certain
frequencies.**

***These are all related
to the
Chakras***



7) CROWN
Sahasrara

- Color: Violet
- Location: Top of Head
- Themes: Oneness, Spirituality

6) THIRD EYE
Ajna

- Color: Indigo
- Location: Center of Forehead
- Themes: Intuition, Wisdom

5) THROAT
Vishuddha

- Color: Blue
- Location: Throat Area
- Themes: Communication, Authenticity

4) HEART
Anahata

- Color: Green
- Location: Center of Chest
- Themes: Love, Forgiveness, Compassion

3) SOLAR PLEXUS
Manipura

- Color: Yellow
- Location: Upper Belly (below chest)
- Themes: Confidence, Personal Power

2) SACRAL
Svadisthana

- Color: Orange
- Location: Below Navel
- Themes: Passion, Relationships, Creativity

1) ROOT
Muladhara

- Color: Red
- Location: Base of Spine
- Themes: Survival, Belonging, Safety

Video

Sept FHS

Heart Chakra Demo with Divining Rods

33:57 – 35:51

**The CHAKRAS (a Sanskrit word meaning “wheel”)
are swirling disks of energy
in the center of the body.**

They spin rotating clockwise.

**The CHAKRAS link to our spine
and central nervous system and are a direct pipeline to
the human neural network.**

**Each CHAKRA
also has a unique frequency
that we perceive as one of
the seven colors of the
rainbow.**

**Seven of them
are within the physical body.**

**The eighth chakra resides
within the Luminous Energy
Field above the head. It is
our connection with the
Divine.**

**The color is LUMINECENT
WHITE.**

Crown Chakra

- **Pituitary Gland, sits at the top of the head and represents a bridge to higher consciousness and enlightenment.**
- **Positioned at the crown of the head, radiating upwards. When activated, it enhances intuition, wisdom, mental clarity, and a sense of unity with the universe. Gives you greater mental clarity and insight.**
- **Out of balance it can lead to headaches, dizziness, fatigue, light sensitivity, and trouble sleeping.**
- **Sensations like pressure or tingling at the crown of the head can also occur as energy moves through this area.**
- **The color is VIOLET.**

Third Eye Chakra

The pineal gland is the main endocrine gland that worked with this Chakra. The pinecone-shaped gland is sensitive to light, which suggests a possible role in circadian rhythms and visual perception.

It can improve mental clarity, intuition, and decision-making, while blockages can manifest as poor memory, headaches, and vision problems.

It produces melatonin, a hormone that regulates sleep-wake cycles. Associated with the Hypothalamus.

The Color is **INDIGO**.

Throat Chakra

Located at the base of the throat. Physically associated with the thyroid and parathyroid glands, larynx, tongue, mouth, ears, and the jaw. Carries the power of breath, creativity and expression.

It fosters [emotional release](#), helping you let go of suppressed feelings and past hurts, which can bring a sense of liberation. There is great strength and potential for Healing in the Power of the spoken Word.

Benefits also include improved spiritual growth, a heightened sense of self-awareness, and a deeper connection to your authentic self and others.

Blockages in the throat chakra may manifest physically as neck pain or stiffness, jaw tension, sore throats, hoarseness, hearing issues, or thyroid problems.

The Color is **SKY BLUE**.

Heart Chakra

Located in the center of the chest, adjacent to the physical Heart. It plays a role with the heart, lungs, and circulatory system. It is also associated with the thymus gland and the upper extremities, including the arms and hands.

A balanced heart chakra promotes feelings of love, connection, and harmony.

An imbalance in this energy center can manifest as issues with these organs and systems, leading to problems like heart conditions, poor circulation, high blood pressure, and respiratory conditions. Emotional difficulties include loneliness and a lack of trust.

The color is **GREEN**, sometimes with **PINK** aura.

Solar Plexus Chakra

The personal power center of the body. The third chakra, located in the upper abdomen, and is associated with your sense of personal power, self-esteem, and purpose. It radiates into the liver, stomach, pancreas, and spleen, governing digestion, metabolism, and emotional fire.

When this chakra is blocked, it can lead to issues such with Intimacy and relationship. Physical symptoms of imbalance include digestive issues like nausea, bloating, digestion and ulcers. Muscle tightness in the abdomen and back, chronic fatigue, and issues with the liver, pancreas, or gallbladder. Muscle tension in the mid-back, diaphragm, and abdomen can also manifest as lower back pain and poor posture,

Lack of creativity, Emotional instability, and Shame, guilt and various physical conditions in these areas.

The Color is YELLOW.

Sacral Chakra

Plays the role in Personal power, self-confidence, identity, willpower, and digestion anchoring both survival and creativity. It controls stomach and upper intestines, liver, gallbladder, spleen, kidney, bladder, pancreas, sexual organs, reproductive parts, adrenal glands, intestines, middle spine, and the autoimmune system of the body.

When this Chakra is blocked Lower back pain, Hip pain, Pelvic pain including Cramping, menstrual irregularities, or infertility, Kidney and Spleen problems, Gastrointestinal issues, Sexual dysfunction, Urinary tract infections, Prostate problems, Anemia, Hormonal imbalances, Anemia, Hypoglycemia, Joint Problems, Low energy, can be signs.

The Color is **ORANGE**.

Root Chakra

Located at the base of the spine, in the perineum area, between the genitals and the anus. It is associated with physical grounding and stability, including the legs, feet, bones, and the pelvic region. It influences the colon, rectum, kidneys, and immune system.

Physical symptoms or tensions in these areas can indicate a blockage in the root chakra, affecting a person's sense of security and well-being. It controls Physical Security: Food, water, shelter, and financial stability, Groundedness, a sense of stability, presence, and connection to the world. Basic Needs, the motivation to eat, sleep, and procreate; Survival, a healthy drive to meet life's needs.

Physical symptoms of a blocked or imbalanced root chakra can include issues with the lower back, legs, feet, and immune system, as well as digestive disorders, fatigue, and unexplained aches in the lower body.

The color is .

Chakra Balancing with the Tennant Biomodulator and Tennant BioTransducer Crystal Wave

Use Biomodulator PRO in Chakra Step (CH Step) or Biomodulator Plus in Infinity turned to at least 200 power with the BioTransducer attached to the Biomodulator. Point the BioTransducer about 3 to 5" away from the back of the Chakra you are treating. You will start at the Root chakra and move up. Treatment time for each Chakra is 1 minute. When you hear the beep move up to the next chakra.

You will be treating the back of the person. Energy enters the Chakras from the back, and the energy flows out the front; except for the Crown and Root Chakra.

As you move up guide the client in the color of the chakra. Make sure the Chakra is always turning clockwise. Have the client see the color and breathe into the Chakra, seeing the color becoming clear and radiant and coming out about 3 feet in circumference evenly around the body. As you move up have the client visually see the chakras stacking and becoming the same size, moving at the same speed, forming the Rainbow Body.

Treating Individual Chakras

You can also treat individual Chakras.

For example, the Heart Chakra is a good one to treat individually. If a person has had something traumatic happen, they have a tendency to shield the back of the Heart Chakra for protection while still having energy in giving coming out the front of the Heart Chakra.

This creates imbalance and can lead to emotional turmoil and disease.

**“One Individual who vibrates to
the energy of pure love
will counterbalance the
negativity of
750,000 who do not”**

David Hawkins

Map of Consciousness

Developed By David R. Hawkins

	Name of Level	Energetic Log	Predominant Emotional State	View of Life	God-view	Process
Spiritual Paradigm	Enlightenment	700-1000	Ineffable	Is	Self	Pure Consciousness
	Peace	600	Bliss	Perfect	All-Being	Illumination
	Joy	540	Serenity	Complete	One	Transfiguration
	Love	500	Reverence	Benign	Loving	Revelation
Reason & Integrity	Reason	400	Understanding	Meaningful	Wise	Abstraction
	Acceptance	350	Forgiveness	Harmonious	Merciful	Transcendence
	Willingness	310	Optimism	Hopeful	Inspiring	Intention
	Neutrality	250	Trust	Satisfactory	Enabling	Release
	Courage	200	Affirmation	Feasible	Permitting	Empowerment
Survival Paradigm	Pride	175	Scorn	Demanding	Indifferent	Inflation
	Anger	150	Hate	Antagonistic	Vengeful	Aggression
	Desire	125	Craving	Disappointing	Denying	Enslavement
	Fear	100	Anxiety	Frightening	Punitive	Withdrawal
	Grief	75	Regret	Tragic	Disdainful	Despondency
	Apathy	50	Despair	Hopeless	Condemning	Abdication
	Guilt	30	Blame	Evil	Vindictive	Destruction
	Shame	20	Humiliation	Miserable	Despising	Elimination

**What are you Sending out from Your
Field?**

It will return to you ten-fold.

Prayer of Unification

The sons and daughters of men and women are

One

And We are One with them.

We seek to love not hate,

We seek to serve and not exact due service,

We seek to heal, not hurt.

Let pain bring due reward of Light and Love.

**Let the Soul control the outer form,
and life and all events**

**And bring to light the Love that
underlies the happenings of the time.**

Let vision come, and insight.

Let the future stand revealed.

**Let inner union demonstrate
and outer cleavages be gone.**

Let Love Prevail.

Let All Beings Love.